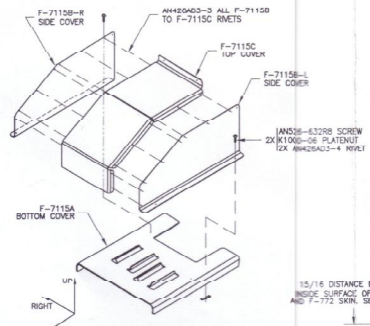
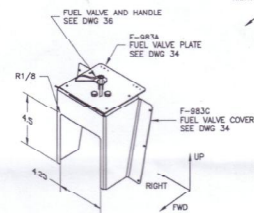


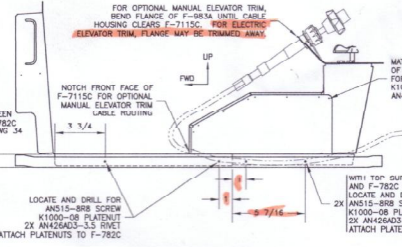
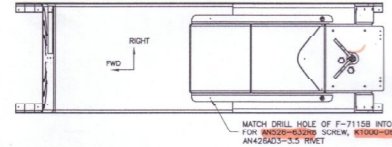
F-782C TRIM DETAIL



F-7115 FUEL PUMP COVER ASSEMBLY

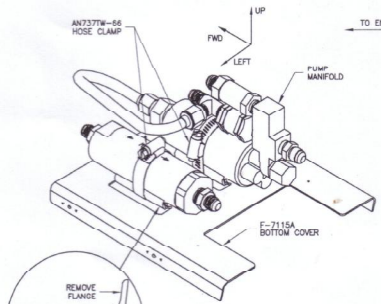
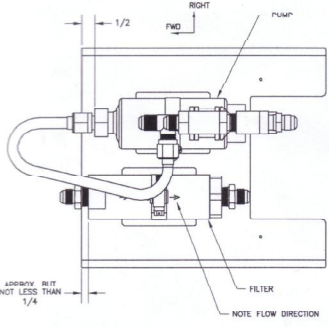
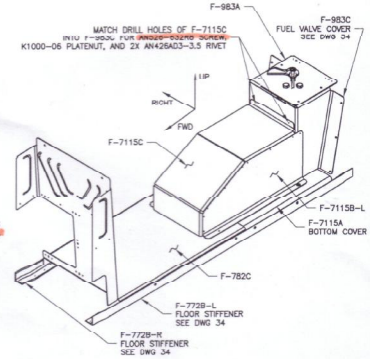


F-983C TRIM DETAIL

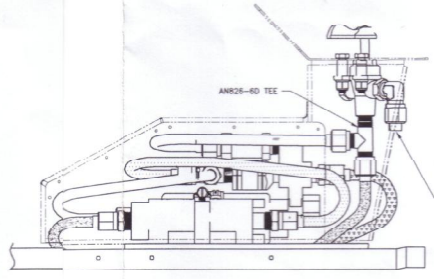
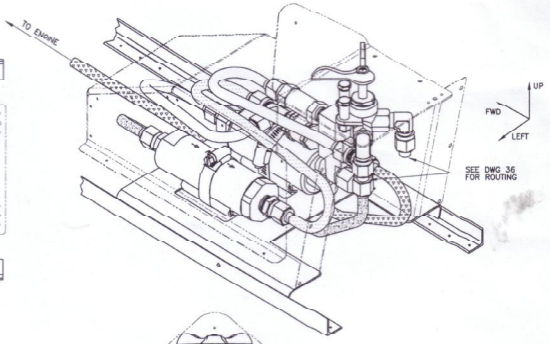
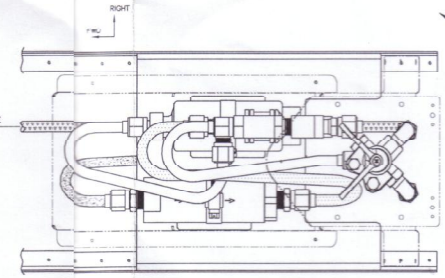


F-782C & F-7115 ATTACH

1/4 SCALE
HARDWARE CALLOUTS MIRRORED ABOUT AIRPLANE CENTERLINE



PUMP & FILTER INSTALLATION
1/2 SCALE



FUEL LINE ROUTING

1/2 SCALE
ALL FUEL LINE BEND RADIUS 1". USE AN819-6D NUT AND AN819-6D SLEEVE ON ALL FUEL LINE ENDS.

BILL OF MATERIALS

QTY	DESCRIPTION	QTY	DESCRIPTION
3	ATO-035X3/8X18 TUBE	4	AN515-8R8 SCREW
1	ES AIRFLOW FUEL FILTER	8	AN526-632R8 SCREW
1	ES AIRFLOW FUEL PUMP	2	AN737W-66 HOSE CLAMP
1	F-7115A BOTTOM COVER	6	AN818-6D NUT
1	F-7115B-L SIDE COVER	6	AN819-6D SLEEVE
1	F-7115B-R SIDE COVER	1	AN826-6D TEE
1	F-7115C TOP COVER	8	K1000-06 PLATENUT
1A	AN426A03-3	4	K1000-06 PLATENUT
12	AN426A03-3.5	10"	RUBBER CHANNEL
12	AN426A03-4		

VAN'S AIRCRAFT, INC. 14401 NE 173RD BOVING, WA 98006, USA

DATE DRAWN: 04/04/01

DRAWN BY: MICHAEL SCHWARTZ

INCHES

SCALE: AS NOTED

RV-7

OP-21

INSTALLING THE RV-7/7A HIGH PRESSURE FUEL PUMP

The sequence and details of installation will vary somewhat, depending on the completion level of the plane in which the fuel pump is installed. It is important to completely read and understand the instructions before beginning the installation to allow for any necessary deviation.

Step 1: Modifying the F-782C center cabin cover and F-983C fuel valve cover

Align the F-7115A bottom cover with the F-782C center cabin cover as shown in the "F-782C Trim Detail". Use the front edge of the bottom cover to locate a trim line on the center cabin cover then, trim away the sections indicated in the drawing.

Remove the front section of the F-983C fuel valve cover using the dimensions provided in the "F-983C Trim Detail".

Step 2: Assembling the F-7115 fuel pump cover

Rivet the F-7115B-L & -R side covers to the F-7115C top cover as shown in the "F-7115 Fuel Pump Cover Assembly" detail. Now, attach the fuel pump cover assembly to the bottom cover using the two matching sets of pre-punched holes and the hardware called-out in the drawing.

Step 3: Locating the cover assembly in the fuselage

With the F-983C fuel valve cover installed according to DWG 34; locate, drill, and attach the fuel cover assembly to the F-772B-L & -R floor stiffeners, the center cabin cover, and the fuel valve cover using the dimensions and hardware shown in the "F-782C & F-7115 Attach" detail.

As shown in the drawing, if the optional manual elevator trim is being used, bend the flange of the F-983A fuel valve plate to clear the cable housing of the pump cover and cut a notch into the front face of the F-7115C top cover to allow for cable routing.

Step 4: Attaching the fuel pump and filter to the bottom cover

Remove the cover assembly from the fuselage and the fuel pump cover from the bottom cover. Cut four lengths of trimmed rubber channel and attach them to the flanges of the bottom cover as shown in the "Pump & Filter Installation" detail.

Position and attach the filter and pump to the bottom cover using the two AN737TW-66 hose clamps. The flow direction of the filter is indicated in the drawing and the pump manifold should be positioned as close to vertical as practical.

Step 5: Routing fuel lines

Fuel lines routed between components in the "Fuel Line Routing" detail have been shaded differently to make routing easier to visualize. Using the tubing and fuel fittings supplied with the kit, rout and attach the fuel lines as shown. The routing shown should be used as a reference; the actual routing should clear any other lines or components that are not shown. All tubing bend radii should be no more than 1".

Step 6: Finishing up

After the rest of the fuel system routing is completed in the fuselage, the fuel pump cover can be reinstalled.